



DYSTRYBUTOR OF SALUS CONTROLS:
OL CONTROLS Sp. z o.o., Sp. k.
Rólna 4,
43-262 Kobilice,
Poland



www.salus-controls.eu

SALUS Controls is a member of the Computime Group
Maintaining a policy of continuous product development SALUS Controls plc reserve the right to
change specification, design and materials of products listed in this brochure without prior notice.

Introduction

The iT500 controls your heating and hot water from anywhere via your smartphone or laptop. Your pc and laptop connects to the system using existing broadband connection. The system is wireless so it's easy to instal.

FEATURES:

- Access and control your heating and hot water via the internet
- Compatible with your PC or smartphone - they connect to the system using your existing broadband connection
- Touch sensor panel
- The internal system uses 868 MHz for robust communication
- 3 system configurations:
 - One central heating zone only
 - Two central heating zones (optional iT300 remote sensor required for second zone)
 - One central heating zone plus hot water
- ECO & HOLIDAY mode
- Free iT500 Plus app to download

Box contains:

- iT500TR thermostat
- iT500RX receiver (a wireless receiver that will connect to your boiler. It is suitable for combination and system boiler).
- iTG500 Internet gateway - connects via a short cable to your broadband internet router. The gateway enables internet access and control of your system.

Product compliance

This product complies with the following EU Directives: Electromagnetic Compatibility 2014/30/EU, Low Voltage Directive 2014/35/EU, Directive 2014/53/EU and 2011/65/EU. Full information is available on the website www.saluslegal.com

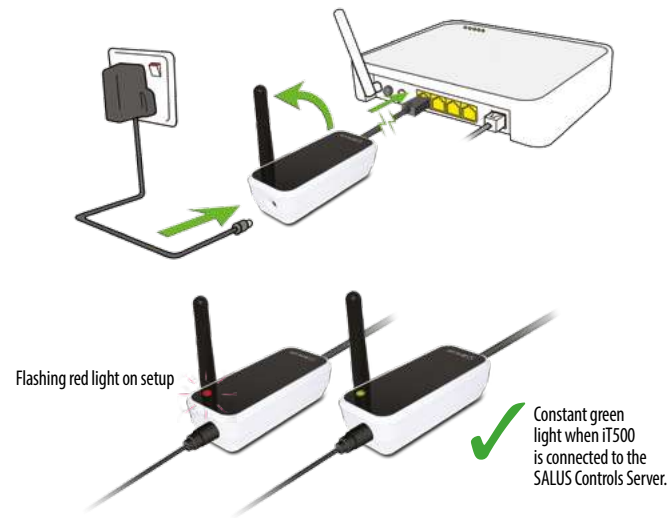
Safety information

Use in accordance with national and EU regulations. Use the device only as intended, keeping it in a dry condition. The product is for indoor use only. Installation must be carried out by a qualified person in accordance with national and EU regulations.

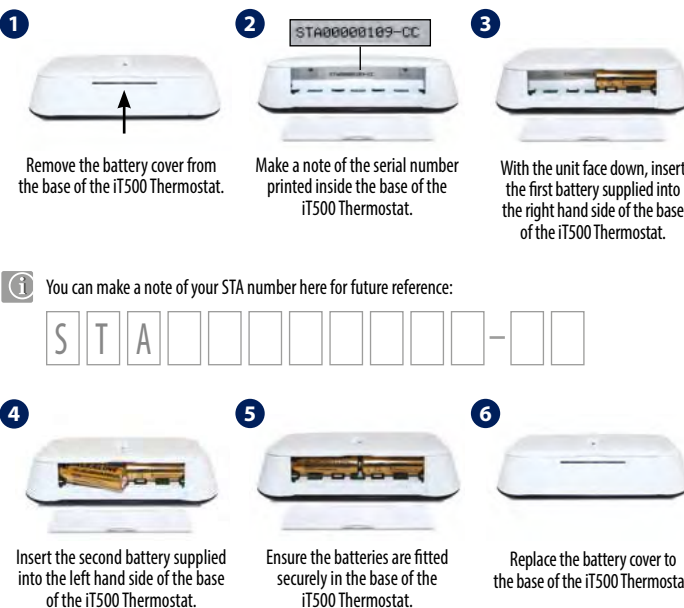
Technical specification

- Supply:** iT500 - 2 x AA Batteries
iT300 - 2 x AAA Batteries
iT500RX - 230 V AC 50Hz
- Rating Max:** CH1: 16 A resistive, 5 A inductive
CH2: 5 A resistive, 3 A inductive
- Temperature range:** 5°C - 35°C (in step 0,5°C)
- Frost protection temperature:** 5°C - 9°C (in step 0,5°C)
- Hysteresis:** 1°C
- Storage temperature:** -20°C to 60°C
- Protection degree IP:** IP 30

Connecting the gateway to your existing router



Inserting the batteries in the iT500 Thermostat



iT500 Plus application

Download the iT500 Plus app, create an account and register your device. Follow the on screen instructions to complete all the steps.

- Features available only on the App:
- HOLIDAY mode
 - Antifrost temperature changing
 - Energy saving mode (set the lowest schedule temp.)
 - Simplified schedule setup

You can add a few iT500 thermostat to one account.



LCD icon description

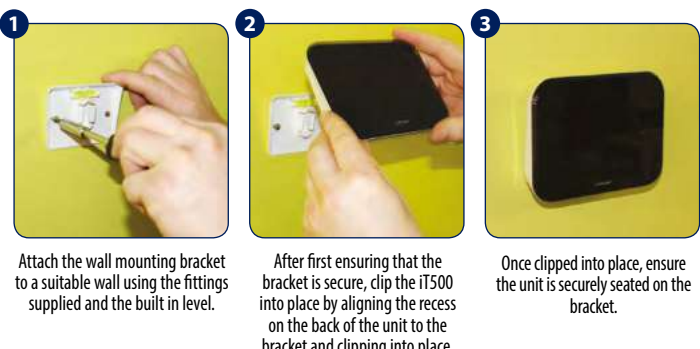
- Settings indicator
- Internet indicator
- RF signal indicator
- Low battery status
- Holiday indicator
- Button lock indicator
- Temperature unit
- Temperature indicator
- Hot water heating in continuous mode
- Hot water override
- Automatic mode
- Antifrost mode
- Hot water heating
- Hot water indicator
- Cooling mode indicator (zone 2)
- Zone 2 indicator
- Heat mode indicator (zone 2)
- Cooling mode indicator (zone 1)
- Zone 1 indicator
- Heat mode indicator (zone 1)
- Program number indicator
- Clock display
- Day of the week

Button functions

- ✓ - Confirm
- ↶ - Return
- ⚙ - Settings / zone changing
- ⏶ - Increase
- ⌚ - Display ON (display highlighting)
- ⏷ - Decrease

Installation of wall bracket docking (optional)

For best results mount iT500 1.5m from ground level.



Desk mount option iT500

For the desk mounted option, simply clip the clear stand supplied separately into the back of the unit.

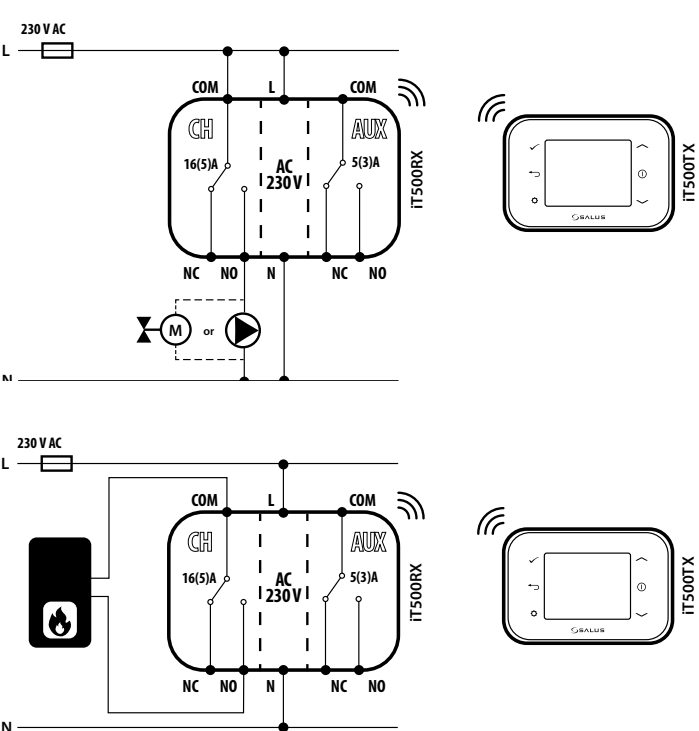
iT500RX receiver switch functions

- AUTO** - receiver operate in automatic mode (works according to thermostat or app)
- MANUAL** - receiver operate according to the switch located below
- OFF** - receiver is disabled
- CH** - in manual mode, zone 1 are turned ON
- AUX** - in manual mode, zone 2 are turned ON
- CH/AUX** - in manual mode, zone 1 and zone 2 (or HW) are turned ON

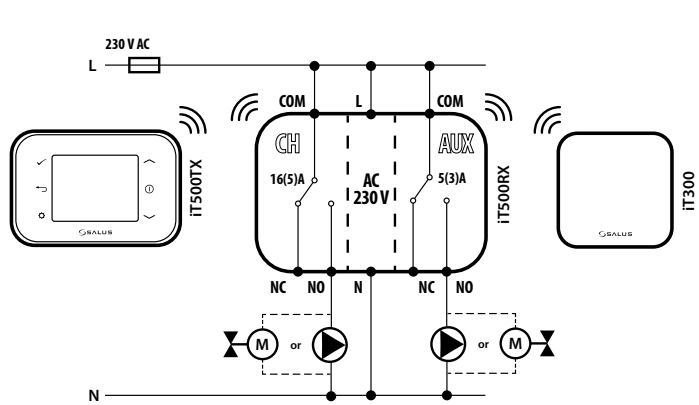
iT500RX terminals description

	Terminal name	Function
	L, N	230V AC power supply
CH (zone 1)	NC	Normally closed terminal
	NO	Normally open terminal
	COM	Common Terminal
AUX (zone 2)	NC	Normally closed terminal
	NO	Normally open terminal
	COM	Common Terminal

Wiring diagrams for single heating zone

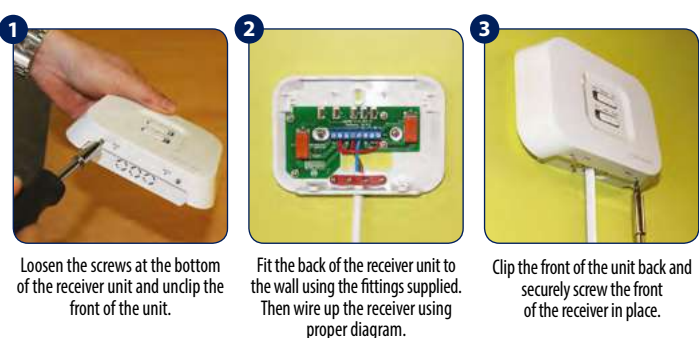


Wiring diagram for 2 heating zones



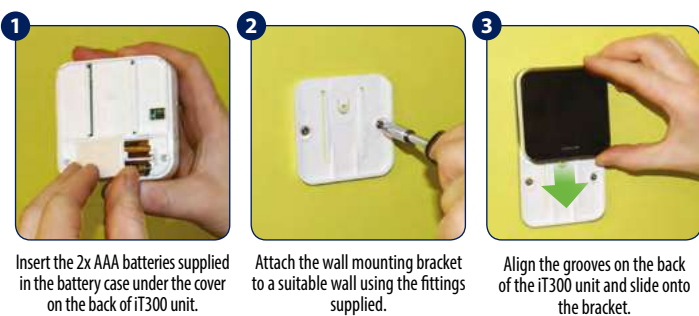
Installation of iT500RX receiver

Note: Always shut off the AC mains supply before installing or working on any components.



Fitting the wall bracket and mounting the iT300

Note: iT300 purchased separately. Can only be used if your system supports second central heating zone.



Setting up the iT500 thermostat

After powering up iT500 for the first time the display will go through the following sequence.

1

OTA (Over The Air) software revision number

2

iT500 Software revision

3

The globe icon will appear when the unit automatically connects to the internet via the SALUS iT500 Gateway. This should take approximately 20 seconds.

Pairing iT500 with iT500RX receiver

1

Using a paper clip, insert into the hole marked SYNC at the bottom of iT500RX receiver.

2

The bottom switch will show a constant red light when iT500RX receiver is ready to pair. Now go to iT500 thermostat.

3

Press the power button to highlight the display.

4

Press and hold and buttons for 3 sec.

5

Press button to launch pairing process.

6

Pairing process can take up to 10 minutes.

7

When iT500RX receiver and iT500 thermostat are paired then the light will be green. Press or to return to the home screen.

FAILSAFE MODE: In the event of RF signal loss, your system will be switched on for 4 minutes, then off for 11 minutes. If you want to disable FAILSAFE MODE when RF link has been lost then move the slide switch on iT500RX to either the Manual or Off position.

Pairing the iT300 to the thermostat

Note: iT300 purchased separately. Can only be used if your system supports second central heating zone.

1

To pair iT300 to the receiver, insert a paperclip or similar object into the hole on the left hand side of iT300 for 2 seconds.

2

A red light will flash in the top right hand corner of the iT300.

3

Press the power button to highlight the display.

4

Press and hold and buttons for 3 sec.

5

Press button to launch pairing process.

6

Pairing process can take up to 10 minutes.

7

iT500 has successfully paired with iT300 when the antenna stops flashing. Press or to return to the home screen.

The iT300 should be installed in the area of the house that the second zone will be controlled from, i.e. Upstairs.

Please note the red LED on the iT300 will continue to flash and eventually timeout.

Selecting your system configuration

This menu should only be entered by the installer as changes can have a detrimental effect on your heating system.

At any time press for return to the previous step or hold for 5 seconds to return to the home screen.

1

Press the power button to highlight the display.

2

Press and hold and buttons for 3 sec.

3

Press button to confirm.

Press or button to select your system configuration. To confirm press button.

4a

One central heating zone.

4b

Two central heating zones.

4c

One central heating zone + hot water system.

5a

or

5b

or

5c

or

Press or button to select heating or cooling* mode. Press button to confirm.
*Cooling can only be selected if your system supports this.

6

Press or button to select temperature unit. Press button to confirm.

7

Press or button to select time zone (GMT). Press button to confirm.

GMT	GMT+1 Hour	GMT+2 Hour	GMT+3 Hour
UK IRELAND PORTUGAL ICELAND*	AUSTRIA POLAND GERMANY CZECH SPAIN FRANCE ITALY SWITZERLAND LUXEMBOURG HOLLAND	BELGIUM DENMARK SWEDEN NORWAY MALTA CROATIA SERBIA BOSNIA SLOVENIA SLOVAKIA	ESTONIA TURKEY CYPRUS GREECE ROMANIA RUSSIA UKRAINE
		BULGARIA LITHUANIA BELARUS* FINLAND MOLDOVA LATVIA	RUSSIA*

The countries marked with * do not observe Daylight Saving Time. For details please see below.

8

DST (Daylight Saving Time) ON will automatically change your time from summer to winter.

Press or button to turn ON or OFF day saving time function. Press button to confirm.

Setting the time and date

When connected to the internet, the iT500 will set time and date automatically. However this can also be set manually.

1

Press and hold button.

2

Press again button to change value.

3

Press button to confirm.

4

Press or button to set 12 or 24 hour format. Press button to confirm.

5

Press or button to set the hour. Press button to confirm.

6

Follow the same steps to set the minutes, day, month and year.

Operating modes

AUTO - automatic mode (works according to the schedule)

Permanent manual mode

OFF - antifrost mode 5°C (changing temperature is available only through the app)

1

Press the power button to highlight the display.

2

Press button to select temperature zone or HW.*
*(only in two heating zones or one heating zone + hot water system)

3

Press and hold and buttons for 3 sec.

4

Press or button to select operating mode. Press button to confirm.

Setting the temperature

Note: If you set the temperature in AUTO mode (temporary override) the setpoint temperature won't be changed until the next program starts.

1

Press the power button to highlight the display.

2

Press button to select temperature zone or HW.*
*(only in two heating zones or one heating zone + hot water system)

3a

Press or button to change temperature. Press button to confirm.

3b

Set hour value of boosting your hot water by pressing or button. Press button to confirm.

1

You can cancel temporary override by holding button for 3 seconds. Setting indicator should disappear.

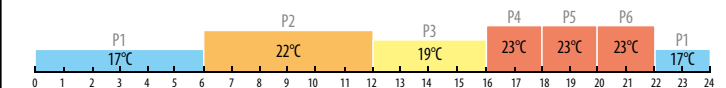
Lock Function

To enable or disable lock function press and hold and buttons together.

Program schedule for heating zone

You can easily set your schedule via iT500 Plus app. If you want to set schedules directly by the iT500 thermostat, please follow the instruction below.

In iT500 thermostat you can define 6 schedule programs per day. You can set different temperature level for each program. While programming specific time interval you must be aware that you are about to set at what time the program will start. For example, if you set program 1 for 6:00 (AM) it means the program is going to run at 6:00 (AM) and will running till the time set for next program. Example of 4 temperature levels for 6 schedule programs:



Note: When you set program schedule, necessarily set all 6 programs. I.e. if you want to set 2 temperature levels, you need to set first temperature level for 1 to 5 program and set second temperature level only for program 6.

1

Press the power button to highlight the display.

2

Press and hold button for 3 seconds.

3

Press button to confirm.

4

Press button to select temperature zone.*
*(only in two heating zones)

5

Press button to confirm.

6

Press button to choose ALL, 5/2 or INDIVIDUAL days. Press button to confirm.

7

Press or button to set start hour for program 1. Press button to confirm.

8

Press or button to set start minutes for program 1. Press button to confirm.

9

Press or button to set temperature level for program 1. Press button to confirm. Follow the steps 7-9 to set next programs.

Program schedule for hot water system

1

Press the power button to highlight the display.

2

Press and hold button for 3 seconds.

3

Press button to confirm.

4

Press button to select hot water system.

5

Press button to confirm.

6

Press button to choose ALL, 5/2 or INDIVIDUAL days. Press button to confirm.

7

Press or button to set start hour for program 1. Press button to confirm.

8

Press or button to set start minutes for program 1. Press button to confirm.

9

Set time for turn OFF program 1 cognately to step 7-8. Press button to confirm. Follow the steps 7-9 to set next programs.

Note: In program schedule for hot water system (HW) you can set 3 schedule programs per day. For each HW program you must define the time of start and the time of the end.